

# AGENDA

**Meeting:** Southern Wiltshire Area Board  
**Place:** Whiteparish Memorial Centre, Common Road, Whiteparish, Salisbury, SP5 2SU  
**Date:** Thursday 30 January 2020  
**Time:** 7.00 pm

---

Including the Parishes of Alderbury, Britford, Clarendon Park, Coombe Bissett, Downton, Firsdown, Grimstead, Landford, Laverstock, Ford and Old Sarum, Odstock, Pitton and Farley, Redlynch, West Dean, Whiteparish, Winterslow.

---

**The Area Board welcomes and invites contributions from members of the public. The chairman will try to ensure that everyone who wishes to speak will have the opportunity to do so.**

If you have any requirements that would make your attendance at the meeting easier, please contact your Democratic Services Officer.

Refreshments and  
networking opportunity from  
6:30pm



Please direct any enquiries on this Agenda to Lisa Moore (Democratic Services Officer), direct line 01722 434560 or email [lisa.moore@wiltshire.gov.uk](mailto:lisa.moore@wiltshire.gov.uk)

All the papers connected with this meeting are available on the Council's website at [www.wiltshire.gov.uk](http://www.wiltshire.gov.uk). Press enquiries to Communications on direct lines (01225) 713114 / 713115.

---

## Wiltshire Councillors

Cllr Richard Britton, Alderbury and Whiteparish (Chairman)  
Cllr Richard Clewer, Downton and Ebble Valley (Vice-Chairman)  
Cllr Christopher Devine, Winterslow  
Cllr Ian McLennan, Laverstock, Ford and Old Sarum  
Cllr Leo Randall, Redlynch and Landford

## **Recording and Broadcasting Information**

Wiltshire Council may record this meeting for live and/or subsequent broadcast on the Council's website at <http://www.wiltshire.public-i.tv>. At the start of the meeting, the Chairman will confirm if all or part of the meeting is being recorded. The images and sound recordings may also be used for training purposes within the Council.

By entering the meeting room you are consenting to being recorded and to the use of those images and recordings for broadcasting and/or training purposes.

The meeting may also be recorded by the press or members of the public.

Any person or organisation choosing to film, record or broadcast any meeting of the Council, its Cabinet or committees is responsible for any claims or other liability resulting from them so doing and by choosing to film, record or broadcast proceedings they accept that they are required to indemnify the Council, its members and officers in relation to any such claims or liabilities.

Details of the Council's Guidance on the Recording and Webcasting of Meetings is available on request. Our privacy policy can be found. [here](#).

## **Public Participation**

Please see the agenda list on following pages for details of deadlines for submission of questions and statements for this meeting.

For extended details on meeting procedure, submission and scope of questions and other matters, please consult [Part 4 of the council's constitution](#).

The full constitution can be found at [this link](#).

For assistance on these and other matters please contact the officer named above for details

	<b>Items to be considered</b>	<b>Time</b>
1	<b>Welcome and Introductions</b>	<b>7.00pm</b>
2	<b>Apologies</b>	
3	<b>Minutes</b> ( <i>Pages 1 - 16</i> )  To approve and sign as a correct record the minutes of the previous meeting held on Thursday 28 <sup>th</sup> November 2019.	
4	<b>Declarations of Interest</b>  To receive any declarations of disclosable interests or dispensations granted by the Standards Committee.	
5	<b>Chairman's Announcements</b> ( <i>Pages 17 - 20</i> )  To receive Chairman's Announcements including: <ul style="list-style-type: none"> <li>• Launch of Community Safety Directory</li> <li>• 2<sup>nd</sup> April at 7.00pm – Our Community Matters Conference</li> </ul>	
6	<b>To note the written reports and updates in the agenda pack or distributed on the night</b> ( <i>Pages 21 - 42</i> ) <ul style="list-style-type: none"> <li>• Fire &amp; Rescue Service</li> <li>• Wiltshire Council Updates</li> <li>• Healthwatch Wiltshire</li> <li>• Clinical Commissioning Group</li> <li>• Current consultations <a href="http://www.wiltshire.gov.uk/council/consultations.htm">http://www.wiltshire.gov.uk/council/consultations.htm</a></li> </ul>	
7	<b>Consultation by the PCC on the Police precept for 2020/21</b>  Jerry Herbert, Deputy Police & Crime Commissioner	<b>7.15pm</b>
8	<b>Matters of Community Wide Interest</b> ( <i>Pages 43 - 52</i> ) <ol style="list-style-type: none"> <li>a) Grant Showcase – Clarendon Juniors Football Club</li> <li>b) Community Engagement Manager Update - Karen Linaker</li> <li>c) Community Policing – Inspector Sparrow to briefly present his latest update report, followed by Gary Higgins from SmartWater to deliver a brief presentation.</li> </ol>	<b>7.25pm</b>
9	<b>Antisocial Behaviour - Prevention and Cure</b>  To receive presentations from Council Officers and the Police, and to discuss how anti-social behaviour is tackled locally.  <i>Speakers: Rowena Lansdown – Antisocial Behaviour Officer WC, Karen Golden – Youth Offending Team WC and Inspector Pete Sparrow</i>	<b>7.50pm</b>

**Remaining Budgets for 2019/20:**

<b>Budget</b>	<b>Remainin g</b>
Community Area Grants	£5,800
Youth Grants	£250
Health & Wellbeing Grants	£3,900
CATG	£5,181

The Board will consider the following applications for funding:

<b>Applicant</b>	<b>Amount requested</b>
<b>Applicant:</b> Salisbury Pride UK <b>Project Title:</b> Salisbury Pride UK Festival <a href="#">View full application</a>	£5000 from the Health & Wellbeing Budget
<b>Applicant:</b> The Milford Preservation Group <b>Project Title:</b> River Bourne Island project <a href="#">View full application</a>	£1,000 from the Community Area Grant budget

**Community Area Transport Group Funding**

The Board will consider one bid to the CATG Budget from:

- A collaborative bid from Landford PC and Downton PC for Bus shelter repairs – requesting £1,238.57 (50% of total project cost).

A report from the Highways Engineer will be circulated at the meeting.

Future Dates:

2020:

12 March - Alderbury

2 April – Our Community Matters Conference – Trafalgar School, Downton

7 May – Winterslow

10 September – venue TBC

2021:  
28 January – Whiteparish  
11 March – Coombe Bissett





# MINUTES

**Meeting:** SOUTHERN WILTSHIRE AREA BOARD  
**Place:** Alderbury Village Hall, Rectory Road, Salisbury, SP5 3AD  
**Date:** 28 November 2019  
**Start Time:** 7.00 pm  
**Finish Time:** 9.00 pm

---

Please direct any enquiries on these minutes to:

Lisa Moore (Democratic Services Officer), Tel: 01722 434560 or (e-mail) [lisa.moore@wiltshire.gov.uk](mailto:lisa.moore@wiltshire.gov.uk)

Papers available on the Council's website at [www.wiltshire.gov.uk](http://www.wiltshire.gov.uk)

---

## **In Attendance:**

### **Wiltshire Councillors**

Cllr Richard Britton (Chairman), Cllr Richard Clewer (Vice-Chairman),  
Cllr Christopher Devine, Cllr Ian McLennan and Cllr Leo Randall

### **Wiltshire Council Officers**

Lisa Moore, Democratic Services Officer  
Tracy Carter, Director - Waste and Environment  
Karen Linaker, Salisbury Community Engagement Manager

### **Town and Parish Councillors**

Alderbury Parish Council – E Hartford & J Kyles  
Britford Parish Council – D Finnie  
Clarendon Park Parish Council – K Rodger  
Coombe Bissett Parish Council – C Chely, D James & A Timbell  
Downton Parish Council – J Brentor  
Firsdawn Parish Council – B Edgeley & R Rogers  
Grimstead Parish Council – R Wilkinson  
Landford Parish Council – K Parker & D Wilson  
Laverstock and Ford Parish Council – D Hayes  
Pitton and Farley Parish Council – C Purves  
Redlynch Parish Council – J Blocksidge & P Stride  
West Dean Parish Council – H Urquhart  
Winterslow Parish Council – P Robinson

**Partners**

Wiltshire Police – Inspector Pete Sparrow

**Total in attendance: 49**

---



<u>Agenda Item No.</u>	<u>Summary of Issues Discussed and Decision</u>
66	<p><u>Welcome and Introductions</u></p> <p>The Chairman, Councillor Richard Britton welcomed everyone to the meeting of the Southern Wiltshire Area Board.</p>
67	<p><u>Apologies</u></p> <p>There were none.</p>
68	<p><u>Minutes</u></p> <p><b><u>Decision</u></b>  <b>The minutes of the previous meeting held on 4 September 2019, were agreed as a correct record and signed by the Chairman.</b></p>
69	<p><u>Declarations of Interest</u></p> <p>There were none.</p>
70	<p><u>Chairman's Announcements</u></p> <p><u>New Waste Collection Arrangements</u></p> <p>The council will be changing the way it collects materials for recycling in the new year. As part of these changes, some recycling collection days may change. Residents will receive further information through the post, including details of any new collection days, in advance of changes being made. Look out for a letter from the council from mid-January onwards. A wide-ranging communications campaign is planned and lots of extra information will be available via the council's website.</p> <p>The changes will make it even easier for residents to use the kerbside recycling collection service and will reduce the number of vehicles required, further reducing our impact on the environment. In summary, the changes are:</p> <ul style="list-style-type: none"> <li>• Paper and cans will be collected for recycling with plastic bottles, pots, tubs and trays, cartons and cardboard from the blue-lidded bin</li> <li>• Glass bottles and jars will continue to be collected from the black box, alongside textiles which should be clean and in securely tied bags to prevent them from getting wet</li> <li>• Blue-lidded bins and black boxes will be emptied on the same day, using the same vehicle in most areas.</li> </ul> <p>You should continue to put paper and cans in your black box until we notify you</p>

	<p>of the date for change.</p> <p><u>Boundary Review</u> The Boundary Review had finished its work and final recommendations were available via the web link that was displayed on the agenda and at the meeting. These recommendations would go through Parliament next year.</p>
71	<p><u>To note the written reports and updates in the agenda pack or distributed on the night</u></p> <p>The Board noted the written information items attached to the agenda, and available online:</p> <ul style="list-style-type: none"> <li>• Healthwatch Wiltshire</li> <li>• Clinical Commissioning Group</li> <li>• Wiltshire Council Updates: <ol style="list-style-type: none"> <li>1. Fly Tipping</li> <li>2. BT proposed payphone removal</li> <li>3. Community Governance Review</li> <li>4. Wiltshire Green Pledge</li> </ol> </li> <li>• Current Consultations: <a href="http://www.wiltshire.gov.uk/council/consultations.htm">http://www.wiltshire.gov.uk/council/consultations.htm</a></li> </ul>
72	<p><u>Matters of Community Wide Interest</u></p> <p><b>Parish Council Showcase – Downton Carers – Jane Brentor</b></p> <p>In Downton, we have a carers group made up of lots of organisations in the area, including the Police, Chemist, Dentist and the Church. Between us we have carried out a number of projects, one of those was to produce a slideshow detailing information on the different services that organisations provide across the area. This was produced with the aim of showing it in the GP surgery, to be viewed by people whilst they wait.</p> <p>Why did we do this?</p> <p>Downton is a fantastic village with an above average proportion of older people. 30% of older people report feeling isolated or lonely, but we recognised that it was not just older people that felt this way.</p> <p>There are 32 different clubs or organisations in the village. The more we did, the more we found out about the village, and in doing this, we realised that there were a lot of people that didn't know about these organisations.</p> <p>It took over a year to finish the project, one hurdle was getting the info slides back when we requested them. We also found out that the surgery's computer was not compatible with the slideshow, so the Parish Council kindly paid for a re-conditioned laptop to run these slides at the surgery.</p>

We ended up with a huge slideshow, with over 90 slides and produced a paper booklet of all the contact details for the organisations. We also have a small group of volunteers who are able to go to attend first sessions at the groups and clubs, for those that find this first step difficult.

We have been invited to attend the GP practice meeting to speak to the GPs and staff, to ask them to encourage patients to use some of the businesses and organisations that Downton has to offer.

We hope to use this in a variety of other settings, maybe the library. Our Parish surgery covers a wider area other than just our parish.

The Chair thanked Jane and noted that this was a really worthwhile project, and suggested that maybe there were other areas that could take this idea forward as a collaborative effort to replicate it in their areas.

### **Community Policing – Inspector Pete Sparrow**

There have been several changes to staffing. John Hutchings was promoted to Inspector and would not be replaced.

- Neighbourhood Community Issues slightly delayed at the moment
- 4 new PCSO's in the area, creating a shuffle of staff
- Simon Nash remains rural
- Matt Smith had moved to Wilton, and continued with his rural focus and John Taylor had replaced Matt

#### **Key areas:**

- In Downton there had been a series of antisocial behaviour incidents and low level offenses carried out by a group of teenagers. We have worked to get on top of this and there had been several arrests.
- Catapults – We would like to see some change to the law around the use of catapults.
- Burglary – There had been a rise over the last few months, particularly in Old Sarum. On Sunday night Officers saw and arrested 2 men who were 'going equipped'.

The Chairman passed on thanks from the Board to Inspector Hutchings for all he had done for the Community Area. He also thanked Inspector Sparrow for the comprehensive Community Report circulated with the agenda papers.

#### **Questions:**

- Thanks for the recent Police efforts in Downton, we have seen an improvement in antisocial behaviour.
- Do any of the emergency services use the locator app 'what 3 words' ?  
Answer: Yes and no, we did use it successfully with a missing person

incident, and it was vital. It is not currently compatible with our systems, but it was hoped that in the new year when we have an upgrade to our systems it would then be compatible. It is a very useful tool when trying to find an address or a person.

**Community Engagement Manager – Karen Linanker**

Summary of funding slide was shown. For every £1 the Board had invested, a further £3.49 had been levered in from other sources.

Last year £40,000 came directly to this community and funded 23 projects. It was hoped that the same level of funding would come to us in the next financial year.

Youth Activities Provision update

We have three main groups in Southern Wiltshire. Winterslow had fed back that their young people were loving the activities the Board had commissioned this year.

All of the youth groups were managing to serve 30-40 young people each week. Old Sarum was currently reviewing its youth leader arrangements.

Community Safety Directory – At a themed meeting earlier in the year, Sergeant John Hutchings came to speak to us about how to keep the community safe. Working with Merv the Board is putting together a directory and would be able to bring this to a future meeting next year.

Rights of Way event feedback – The Board held a themed session in Downton at the Memorial Hall, which was a very smart new space. This was a hot topic for people in this area, we heard from Head of Rights of Way, and have had positive feedback following the session. The Board would be repeating workshops like this next year.

Silver Salisbury Programme – This year this event was pushed out into the rural areas surrounding Salisbury, with some sessions being held in our community area. All along the theme of helping our older people get out more and access activities in the community to feel less lonely.

JSNA - Thanks to the 235 people that responded to the JSNA assessment. That was only 1% of our pop, but this would feed in to our other data. The Board would be holding a JSNA event in April 2020.

The Chairman noted that he took great pleasure in the positive outcome, detailed in the youth activities report. The Board had been keen to support and fund these activities so it was great to hear they were appreciated by the young people.

73

Community Based Eco Projects - 'The Village to the world via Wiltshire'

The Chairman noted that all of the modest projects taking place locally really did make a contribution to the wider programme to address climate change and in their own right were really worthwhile community projects.

The Board then received the following presentations:

Cllr Richard Clewer, Cabinet Member for Corporate Services, Heritage, Arts, Tourism, Housing, Climate Change and Military-Civilian Integration presented on Wiltshire Council's Carbon Neutral Pledge. The key points from the presentation were:

In February 2019 Wiltshire Council resolved to:

- Acknowledge that there is a climate emergency
- Seek to make the county of Wiltshire carbon neutral by 2030
- Establish carbon baseline and renewables baseline

Wiltshire Council Cabinet committed to make Wiltshire Council carbon neutral by 2030. A Global Warming and Climate Emergency task group had been established to consider:

Renewable energy generation, energy use and efficiency in the following areas:

-

- Planning
- Transport and air quality
- Waste
- Land use
- Business and industry
- Carbon baseline and renewable energy baseline

Residents were asked to consider a Green Pledge and act on some of the following:

- Leave the car at home and walk more
- Take shorter showers and turn off taps when brushing teeth
- Try and use as little single-use plastic as possible
- Use a reusable cup
- Use bags for life
- Recycle as much as you can
- Turn off lights when not using them
- Install a smart meter to help you manage energy use

The Council approved £5.2 million to carry out work to improve carbon emissions and generate income from the 138 buildings it operates from. There would also be the introduction of solar canopies on the Park & Ride sites, with the inclusion of some electric charging points.

Housing was more tricky, new build was easier, but existing buildings harder to deal with emissions from housing. The Council's Task Group was looking at this

in detail, and Cllr Clewer would be working with them to develop the Carbon Reduction Strategy for next year.

Waste routes – Following the implementation of the changes to the recycling service early next year, there would be one route instead of 2, reducing the carbon footprint, cutting back from 3 to 2.

Friends of the Earth stated that Wiltshire was the most climate friendly County in England and Wales. Please sign up to the Green Pledge!

### Questions

- This is all very positive, one thing before you spend £12m on upgrading streetlights, could you look at the solution of each street light having its own generator above it, what it gives out it takes in.  
Answer: The LED programme was approved a year ago, I will see if that can be added in.
- It is hard to find places to recycle some items like crisp packets.  
Answer: We have a new version of the My Wilts app so we are looking at adding in a function to show where people can recycle different items.
- The power supply was running on empty at the moment, we know a nuclear power station was due to be pulled. In the winter when power was needed most, we would have just enough without plugging in all of these electric vehicles.  
Answer: We do not want to put expensive infrastructure in for charging points of electric vehicles, if that was not going to be the way forward. We are planning before we go down those routes.
- Worried about gas powered vehicles, in the event of a crash, the gas would expand approximately 100 times. In town centres if you had two gas vehicles crashing that would wipe out the surrounding area.  
Answer: Central Government would set safety standards, I will make sure that whatever we are doing is in line with that.
- We should reuse more and encourage people not to throw plastic away until its totally useless.  
Answer: As we develop the Strategy we will look at this
- Not everyone can walk or cycle, there needs to be thought about how we make adequate provisions for public transport.  
Answer: Yes, we may need a different model for public transport. We have not started to discuss this yet.
- We need to go back to make do and mend.  
Answer: Yes if that is possible.

Local Group presentations:

Downton Green Group – Jane Morgan

We have been going for over ten years and have signed up to the transition movement. Recent environmental issues have received more prominence recently. Our group has organised events on a variety of subjects. Some of our work includes:

- Encouraging the use of local food markets and shops, to lessen our carbon footprint.
- Encouraging the use of our local green spaces and to grow insect friendly flowers.
- To set up a small recycling centre for items that are not yet included in the kerbside collection service.
- Supporting the local schools eco council.
- Write an article each month for the parish news.

We meet once a month in the pub and welcome any new members.

East Grimstead Nature Group – Rosie Wilkinson

We set up a nature group this year to focus on increased biodiversity in the village. We are currently cultivating wildlife strips on the village green, which are paid for by the Parish Council.

We have sown seeds in these designated areas, and the remainder of the green was left to allow ample space for parking. After a few weeks of not mowing we saw over 12 species of native plants growing there.

We have had lots of willing volunteers to help sow seeds, and it is hoped that next summer these will be buzzing with life.

Our next project is to create an insect hotel on the green, as the long grass and flowers are incredibly beneficial to insects.

In October we looked to our pond and worked with the friends of Bentley Wood and Hazel Hill Wood. Wildlife will move in if you give it a chance.

We have also set up a crisp packet recycling site in our parish phone box. The parish council hopes to increase this provision to include other items.

Coombe Bissett Down Butterfly Bank – Melanie Evans

This is a three-year long project funded by National Lottery fund. We purchased an area of land, converting from arable to a butterfly bank planted with wildflowers.

Some of the species are rare and numbers had been decreasing over time. Next year there will be many events and voluntary opportunities to be involved in. Packets of wildflower seed were available at the meeting to encourage people to sow at home.

Love Repair Café – Paul Bromage

We are part of the make do and mend brigade, and much about doing your bit. We are a community group that opens on Wednesdays. We repair small domestic items and promote the re-use of them.

Operating since March 2019, there have been 400 items processed by a range of 21 volunteers. Some work is done at home or in homes and some items are repaired whilst people wait. We only charge for materials and donations are accepted.

We strip items down for a nominal £1 fee, allowing separation of the items for reuse or recycling. One of the smallest items I dismantle is an inhaler. There are 12 individual plastic parts, if dismantled, you can recycle it.

The biggest item is a timber framed house, built in the 1930's, my intention is to dismantle it, restore it and reassemble it, as an open-air museum.

We meet in Redlynch 10.00am to 2.00pm, for more info email us at: [loverrepaircafe@gmail.com](mailto:loverrepaircafe@gmail.com)

Salisbury Area Greenspace Partnership – Nicola Lipscombe

We are a community led group launched 9 years ago. We have backgrounds in many areas and we focus on the main areas of Salisbury, Laverstock and Wilton.

Why is Green Infrastructure so important - GI regulates our environment & delivers vital ecosystem services, supports sustainable movement & active travel, is important for our health & wellbeing, and creates attractive & distinctive places to live & work.

We look at all of our natural and semi natural environment, as these spaces are vital for our health & wellbeing.

Plants and vegetation help to improve the quality of the air we breathe, especially in poor areas of air quality, and can enhance our quality of life.

Our green and blue spaces are under threat from development and infrastructure.

Collecting baseline information –

- Greenspace assets
- Connectivity
- Development pressures
- Ridgelines, rivers & flood zones
- Administrative boundaries
- Priority habitats
- Designated sites.



	<p>We currently input into the work of the Air Quality working Group</p> <p>Not against development, just think it needs to be in the right place.</p> <p>The Chairman concluded by thanking presenters on sharing information on an interesting array of projects and activities across the patch. The idea of considering how there could be more joined up working with these initiatives could be looked at further.</p> <p>A list of eco awareness days was circulated at the meeting.</p> <ul style="list-style-type: none"> <li>6 January – Big Schools Bird Watch</li> <li>20 January – Big Energy Saving Week</li> <li>2 February – World Wetland Day</li> <li>14 February – National Nest Box Week</li> <li>20 March – Great British Spring Clean</li> <li>23 March – World Meteorological Day</li> <li>22 April – Earth Day</li> <li>30 April – National Gardening Week</li> <li>4 June – Butterfly Education and Awareness Day</li> <li>5 June – World Environment Day</li> <li>8 June – World Oceans Day</li> <li>11 June – Bike Week</li> <li>26 June – National Insects Week</li> <li>23 July - National Marine Week</li> <li>Organic September (month event)</li> <li>16 Sept – Great British Beach Clean</li> <li>22 September – World Car Free Day</li> <li>23 September – Seed Gathering Month</li> <li>25 September – Recycle Week</li> <li>October – international walk to school month</li> <li>24 November – National Tree Week</li> <li>1 December – Tree Dressing Week</li> <li>5 December – World Soil Day</li> </ul>
74	<p><u>Community Area Transport Group (CATG) Update</u></p> <p>The Board considered the recommendations for funding from the last meeting held on 25 September 2019, as detailed in the report attached to the Agenda.</p> <p><b><u>Decision</u></b>  <b>The Southern Wiltshire Area Board approved the CATG recommendations for the following schemes:</b></p> <ul style="list-style-type: none"> <li>• <b>Issue 7134 – Bishopdown to Old Sarum cycle route - £1200</b></li> <li>• <b>C12 Nunton – Footway Improvement works, topographical survey - £1500 (subject to a 25% contribution from PC)</b></li> <li>• <b>Issue 6529 – Installation of kerbs in The Borough, Downton - £3000</b></li> </ul>

### Area Board Funding

The Board considered the applications for funding and the proposal to award delegated powers to the CEM, as detailed in the agenda pack.

### Delegated Decisions

The Board considered the recommendation to award delegated decision powers to the CEM in consultation with the Chairman, for small grant applications of up to £100. Applicants would still be required to complete an application in line with current criteria.

### Decision

**The Southern Wiltshire Area Board agreed to award delegated powers to the Community Engagement Manager in consultation with the Chairman, for small grant applications of up to £100, with the condition that any such delegated funding decisions would be reported back to the Board at the next scheduled meeting as part of the Funding Item.**

### Community Area Grant Scheme

The Board considered four applications for funding, as detailed in the agenda.

Coombe Bissett Parish Council requested £800 towards a Speed Indicator Device (SID) for use in Coombe Bissett and Homington.

### Decision

**Coombe Bissett PC was awarded £800 towards the purchase of a SID for Coombe Bissett & Homington.**

### *Reason*

***The application met the Community Area Transport Grants Criteria for 2019/20.***

River Bourne Community Farm (RBCF) requested £4500 towards the Long Barn Renovation.

### Questions:

- Is there a PC contribution? Answer: Yes £900 confirmed.
- Your reserves are substantial, you are only contributing £300 to this project. Answer: Part of this was also funded by the Princes Charitable trust. The balance is covered from the RBCF.
- What is the total amount involved? Answer: The contribution from RBCF is actually £1500
- Is the Chicken hatchery area a free-range set up? Answer: Yes. This is a small-scale project that the secondary children will be directly involved in, small quantities of rare breeds.

### Decision

**River Bourne Community Farm was awarded £4500 towards the Long Barn Renovation.**

**Reason**

***The application met the Community Area Grants Criteria for 2019/20.***

Alabare Christian Care and Support requested £4000 towards the Café Kitchen project at the Old Sarum Development Centre.

Questions:

- Have the PC contributed? – Answer: Yes £1000 confirmed
- Total cost is £37,700, there seems a shortfall of £9k. Answer: There was a shortfall of £9850, so that's now £8950, we will do a further application to the Clothworkers Foundation.
- Where do your clients come from? Answer: That depends on current needs and clients moving in to our areas.
- Why have you opted for shipping containers instead of portacabins? Answer: They are recycled and replaceable and can be moved to different locations.
- This will provide isolated people with an everyday place that people can go to.
- There would need to be a condition on the funding being given subject to the other funding being secured.

Decision

**Alabare Christian Care and Support was awarded £4,000 towards the Café Kitchen project at the Old Sarum Development Centre, with the following condition:**

- **the funding is awarded subject to the other funding being secured.**

**Reason**

***The application met the Community Area Grants Criteria for 2019/20.***

Nomansland Community Events requested £648 towards Portable Floodlights.

The Parish council will fund 50%, and the kit could be used as a community asset for other events.

Questions:

- There are only 3 street lights in the village, which makes the village quite dark.
- Would this be shared with the sports association? – they don't exist at the moment. The members stepped aside.

Decision

**Nomansland Community Events was awarded £648 towards portable floodlights.**

**Reason**

***The application met the Community Area Grants Criteria for 2019/20.***

	<p><u>Youth Funding</u> The Board considered one bid to the Youth Funding budget.</p> <p>The Bridge Youth Project requested £3260 towards the Mentoring Scheme to implement measures to promote positive mental health for young people.</p> <p><u>Questions:</u></p> <ul style="list-style-type: none"> <li>• What will this buy? <u>Answer:</u> All the money purely funds the mentor coordinator.</li> <li>• Why is this not a Health &amp; Wellbeing (HW) grant? <u>Answer:</u> Because it supports young people</li> <li>• This project was a good counterbalance to the youth activities.</li> <li>• Cllr McLennan - We usually put these projects to the young people, this time you have not done that, it would have been better for there to be a recommendation from the young people, and so it would have been better coming from the HW budget for that reason. <u>Answer:</u> That is a valid point, we will consider this moving forward.</li> </ul> <p><b><u>Decision</u></b> <b>The Youth Project was awarded £3260 of Youth Funding, towards the Bridge Mentoring Scheme.</b></p> <p><u>Health &amp; Wellbeing Funding</u> The Board considered two applications for funding as detailed in the agenda.</p> <p>Carers Support Wiltshire requested £2256 towards the 'Make a Friend, Be a Friend' initiative.</p> <p><u>Questions:</u></p> <ul style="list-style-type: none"> <li>• Over what period will the monitoring take place? <u>Answer:</u> 12 months.</li> <li>• Will we see a result after 12 months? <u>Answer:</u> Yes and I can provide updates along the way too.</li> <li>• There are little facilities in the village, this could reach some of the elderly members in the village.</li> </ul> <p><b><u>Decision</u></b> <b>Carers Support Wiltshire was awarded £2256 towards the 'Make a Friend, Be a Friend' initiative.</b></p> <p>Salisbury Pride UK requested £5000 towards the Salisbury Pride UK Festival in 2020. There was no one in attendance to answer questions on the application.</p> <p><b><u>Decision</u></b> <b>Salisbury Pride UK was deferred until the applicant can be in attendance</b></p>
76	<p><u>Close</u></p> <p>The Chairman thanked everyone for coming and closed the meeting.</p>

	<p>The next meeting was on Thursday 30 January 2020, 7.00pm at Whiteparish Memorial Centre.</p>
--	---

This page is intentionally left blank

<b>Report to</b>	Southern Wiltshire Area Board
<b>Date of Meeting</b>	30/01/2020
<b>Title of Report</b>	Community Safety Directory

### **COMMUNITY SAFETY**

#### **DIRECTORY OF PREVENTATIVE RESOURCES FOR PARISH COUNCILS**

##### **Introduction**

At a meeting of the Southern Wiltshire Area Board last year time constraints prevented a workshop session on how our Parish Councils might take precautions to reduce or mitigate the risks to which their communities are exposed. It was therefore decided to produce a directory of resources available to parishes which might stimulate consideration of practical precautionary measures.

The full directory will be available at the meeting on the 30<sup>th</sup> January, an index is attached at appendix 1.

##### **Risks, accidents, disasters**

Our world is full of risk - exposure to a vast range of factors which adversely impact our health, wellbeing and ability to enjoy our lives to the greatest extent allowed by our personal circumstances.

These threats range from natural disasters such as floods to increasingly sophisticated cyber attacks and scams operating on a global basis. Such events can affect us individually and/or collectively.

##### **Prevention and risk reduction - not response**

By their very nature some disasters can't be prevented so we hope that Parish Councils will have given thought to how they might respond to such events - perhaps in the form of a Disaster Recovery Plan.

But this Directory is about helping PCs to think about taking action to reduce the extent and severity of the risks to which residents are exposed - and not about how to respond to adverse events if/when they actually happen.

##### **Taking prevention forward**

We hope that PCs will use this Directory to consider the following questions:

1. Are there risk areas where they could/should take preventative measures to help safeguard their community collectively?
2. Are there preventative measures available to individual residents which the PC feels it should publicise and promote?

And having addressed these questions we hope that PCs might consider:

- appointing a Community Safety Lead - a single point of contact and coordination for the emergency services, civil authorities, Neighbourhood Watch and other 'Watch' groups. (Such a Lead need not necessarily be a parish councillor.)
- what further information and guidance it needs (eg presentations to their PC).
- whether/how to disseminate parts or all of the Directory to residents - perhaps via community groups.

*Karen Linaker, Community Engagement Manager, Wiltshire Council*  
*Richard Britton, Chairman Southern Wiltshire Area Board*

And we wish to especially acknowledge the generous help of Merv Quick, Wiltshire Neighbourhood Watch Association committee member

For further information contact Karen Linaker  
[karen.linaker@wiltshire.gov.uk](mailto:karen.linaker@wiltshire.gov.uk)



## Appendix 1

### Community Safety – directory of preventative resources for parish councils: Index of main headings

Burglary	Concealed signage or absence of signage
Rural Crime	Pot holes
Domestic Abuse	Subsidence
Neighbourhood Issues	Road conditions causing accident hazards including flooding and subsidence
Anti Social Behaviour	Vegetation overgrowth
Child Sexual Exploitation	Road Safety Education
Elder Abuse	Flooding
Cyber crime	Lightning strikes
Identity theft / fraud / rogue trading	Fire
Knife Crime and weapons assault	Snow
Criminal damage including graffiti and vandalism	Health Epidemics
Drugs	Electric, Gas, Water
Alcohol related disorder	Contamination
Terrorism	Vulnerable Adults
Modern Slavery	Loneliness and vulnerability
Vehicle crime, including speeding, parking, abandoned vehicles	Vulnerable children
Unauthorised encampments, unlicensed scrap metal dealers, unlicensed waste carriers	Health and safety
Road traffic collisions	





## South East Wiltshire Station Managers Area Board Report – January 2020

### Are you Safe & Well?



**IT ONLY TAKES  
ONE ACCIDENT  
TO START A FIRE.**

ARE YOU SURE YOUR  
SMOKE ALARMS ARE  
WORKING?

**TEST YOURS NOW.**



#### The key messages for a safer home

- **Ensure you have working smoke alarms installed on all levels of your home.** Working alarms can give you the vital time needed to escape in a fire. Test your smoke alarms regularly and never remove batteries!
- **Never leave cooking unattended.** The majority of fires start in the kitchen so this is a high-risk area. Many of us enjoy a merry tippie over the festive season but be sure to avoid cooking whilst under the influence of alcohol. Always turn off kitchen appliances when you have finished cooking.
- **Never leave burning candles unattended.** Keep candles out of the reach of children, and away from decorations, cards and wrapping paper, fires, lights and heaters.
- **Put your cigarette out, right out.** Make sure your cigarette is fully extinguished and take care when under the influence of alcohol or tired. It's very easy to fall asleep while your cigarette is still burning and set furniture alight.
- **Never use heaters to dry clothes.** Heaters can start fires when things are placed too close to them. Keep them well away from curtains, clothing and furniture.



- **Don't overload sockets.** Ensure only one plug per socket. Always turn off plugs when they are not in use, except those that are designed to be left on, like freezers.
- **Ensure you switch off fairy lights** and unplug them before you go to bed or leave the house. Check your Christmas tree lights conform to the British Standard (BS EN 60598) and are in good working order before use.
- **Always use an RCD (residual current device)** on outdoor electrical equipment. This safety device can save lives by instantly switching off the power if there is a fault and can be found in any DIY store.
- Make sure that everyone in your home knows what to do in a fire – **in the event of fire you should get out, stay out and call 999**

Our dedicated team of Safe & Well advisors can (at request) come to your home and discuss with you and your family how to maintain and regularly test you smoke alarms. They will also assist you in establishing a fire plan which will enable you to make a safe exit or go to a place of safety in the event of a fire in the home.

But this is not all the advisors do, they are also able provide you with information on how to make simple changes to enable us all to live a healthier life style. They can assist in organising support from organisations such as Age UK to assist our older relatives, arranging mental health support for those who maybe finding things just a little bit harder to deal with and, can also signpost with Safeguarding issues. All of which can bring together our partner agencies within the NHS, Council, Police and volunteer services who's aim is to enable those most vulnerable in our communities to be able to live in their own homes with the correct support.

## DO YOU KNOW A CHARLIE

More than 6.5 million people in the UK are currently caring, unpaid, for a family member or friend who is older, disabled or seriously ill. Yet many people don't identify themselves as carers, they simply see themselves as spouses, partners, parents, children or friends.

A CHARLIE is a person whom meets at least one of the following criteria:

- **Care and support needs**
- **Hoarding and/or mental health issues**
- **Alcohol and medication use**
- **Reduced mobility**
- **Lives alone**
- **Inappropriate smoking**
- **Elderly and would benefit from support**

It only takes a few minutes to email or call us but can save a lifetime of heart ache for those who may suffer in silence, especially when they are cold in winter months or do not have the correct means to alert them to a fire in their home or to the dangers of carbon monoxide poisoning.



# Hoarding



We all keep things we don't really need. Some of us have more possessions than we have storage for. But hoarding is a complex issue that goes far beyond untidiness or indecisiveness.

Hoarders can fill entire rooms from floor to ceiling, leaving themselves the minimum space in which to live. This retention of property presents a real fire risk and makes it far harder for firefighters to be able to tackle any blaze.

The Fire and Rescue Service can't solve the problem of hoarding; however, where we know there is an issue, we can work with other agencies to try and reduce the risk of fire.

Evidence from across the country shows that:

- In 90% of all residential fires, the fire itself is contained to the room where it started. However, that figure drops to 40% where there is hoarding – as this additional material fuels the fire and makes it spread more quickly.
- When there is a fire in a hoarder's home, there is a far greater risk that the individual and/or family members will find it difficult or impossible to escape.
- Common materials kept by hoarders include newspapers, magazines, books and soft furnishings – all of which are highly combustible.
- The presence of vast amounts of hoarded material creates a risk to firefighters, both in getting to the fire and through increased heat and smoke.

By offering Safe and Well visits, and installing smoke alarms, we can work with hoarders to try and make their homes more fire safe. If they want help in dealing with their hoarding compulsion, then we can refer them to other agencies for that support. However, we know that not every hoarder is ready to take that step and we want to ensure that they are as fire safe as possible, whatever the circumstances of their home.

Contact us on either:

Email: <http://www.dwfire.org.uk/safety/safe-and-well-visits/>

Phone: 0800 038 2323



**DORSET & WILTSHIRE  
FIRE AND RESCUE**

# Recruitment



As a predominately rural service, we are hugely reliant on those who live and work in the local community to support us by becoming an 'On Call Firefighter'. Some of our local stations often struggle to provide a fire appliance during the day and this is due to a lack of available crew members at the station who are able to provide us with cover during working daytime hours.

Are you or do you know someone who lives or works within 5 minutes of your local fire station and would like to become an On-Call firefighter? Are you an employer that is willing to release a member of your staff to join us? Without the willingness of those in the community to join us then we will continue to struggle to turn fire appliances out for emergencies.

We will provide full training which includes firefighting skills, first aid, driving skills for Cat C vehicles (if required) and fire prevention and protection skills. All these skills that we provide can assist in an individual's normal workplace making that a safer environment within which to work. We provide all the uniform and fire kit and can help with travelling so there should be no expense to an individual once they manage to get in.

Payment / salary is based on the number of hours an individual can provide us and we provide holiday leave entitlement and a pension.

Our appliances and stations are based in the community and we need you as the community to help staff them.

Contact us on our recruitment hotline on 01722 691444 or email [recruitment@dwfire.org.uk](mailto:recruitment@dwfire.org.uk) or pop into any one of our stations to find out more.



## **Protection**

On-going interaction by Protection Team members with Local Authorities, Private landlords and tenants regarding fire safety-related matters: external cladding systems; fire detection and warning systems; fire resisting doors (& self-closers); combustibility/fire resistance of construction materials; commercial and residential sprinklers systems and water-mist suppression systems

### **General Enquiries**

If you have a general fire safety enquiry regarding commercial property, please email [fire.safety@dwfire.org.uk](mailto:fire.safety@dwfire.org.uk) and the Fire Safety Team will respond in office hours.

### **Fire Safety Complaint**

If you wish to tell us about fire safety risks in commercial premises, such as locked or blocked fire exits, you have three options:

- You can email the fire safety department at [enforcement@dwfire.org.uk](mailto:enforcement@dwfire.org.uk)
- Call 01722 69 1717 during office hours (9am-5pm).
- Call our Service Control Centre on 0306 799 0019 out of office hours (5pm-9am)

# **Community Safety Plan**

DWFRS Community Safety Plan 2018-2022 outlines our plans for the future. It explains the diverse services we provide and how we plan to improve and deliver them over the four-year period. The plan can be found on the DWFRS website <http://www.dwfire.org.uk/community-safety-plan/>

# Response

**Total Incidents attended by DWFRS for Salisbury, Wilton & Amesbury:** DWFRS have responded to a number of incidents in since the last report and the associated table shows the full number of incident related vehicle movements undertaken by each station from 23<sup>rd</sup> August 2019 up to and including the 9<sup>th</sup> December 2019.

There have been no incidents of note that require reporting upon during this time.

## Demand

### Salisbury Fire Station P1 Appliance

Category	Total Incidents
No. of False Alarms	114
No. of Fires	77
No. of Road Traffic Collisions and other Emergencies	88
<b>Total</b>	<b>279</b>

### Salisbury Fire Station P2 Appliance

Category	Total Incidents
No. of False Alarms	19
No. of Fires	33
No. of Road Traffic Collisions, other Emergencies and Stand By's	133
<b>Total</b>	<b>185</b>

Salisbury has 4 Whole-Time (fulltime) watches providing 24/7 cover and are supported by the On Call crew who are called into the station to crew the P2 appliance if the Whole-Time appliance is mobilised to an incident.

The number of movements under Road Traffic Collisions etc seems high as this included Stand By cover while the P1 appliance is committed to another incident. It is important that the City maintains an immediate response should the first appliance not be available.



**Wilton Fire Station P1 Appliance and Water Carrier**

Category	Total Incidents
No. of False Alarms	13
No. of Fires	8
No. of Road Traffic Collisions and other Emergencies	33
Water Carrier movements	8
<b>Total</b>	<b>62</b>

**Amesbury Fire Station P1 Appliance**

Category	Total Incidents
No. of False Alarms	8
No. of Fires	14
No. of Road Traffic Collisions and other Emergencies	23
<b>Total</b>	<b>45</b>

Matty Maggs

Station Manager, South East Wiltshire. Salisbury, Wilton & Amesbury

Email: [Matthew.maggs@dwfire.org.uk](mailto:Matthew.maggs@dwfire.org.uk)

Tel: 07595 799708 / 01722 691137

[www.dwfire.org.uk](http://www.dwfire.org.uk)



# Wiltshire Council Information Item

<b>Subject:</b>	<b>Motiv8 Children's and Young People's Service</b>
<b>Web contact:</b>	<a href="https://www.dhi-online.org.uk/get-help/young-peoples-drug-alcohol-services/motiv8">https://www.dhi-online.org.uk/get-help/young-peoples-drug-alcohol-services/motiv8</a>

Our objectives are to engage with young people's groups and in turn promote the availability of the service for young people.

## **About the service:**

Motiv8 provide support services in Wiltshire for children and young people, up to their 18th birthday, with problematic substance use, and for children, young people and families affected by parental substance use. Its primary objective is to improve the health, welfare and life chances of those vulnerable to, or experiencing, substance misuse.

Motiv8 provide advice, guidance and one-to-one sessions for young people who are having problems with drugs and/or alcohol. The service is free and confidential, and aim to provide a flexible and non-judgemental space for young people to be open about the problems they are facing.

## **How we help:**

Motiv8 sees young people in and around Wiltshire, in their communities; at schools, colleges and home visits.

Our services include:

- Brief interventions
- Crime Prevention - community resolutions
- Individual sessions
- Outreach
- Groupwork
- Harm reduction information and advice
- Signposting to other services
- Workshops and training for professionals
- Workshops and training for young people

## **Motiv8 Team Manager:**

Natalie Huggins

Please contact should you require any further information about the service.

## **Phone**

0800 1696136

## **Email**

[info@dhimotiv8.org.uk](mailto:info@dhimotiv8.org.uk)

## **Instagram**

dhimotiv8



# Wiltshire Council Information Item

<b>Subject:</b>	<b>Community Area Joint Strategic Needs Assessment (JSNA)</b>
<b>Web contact:</b>	<a href="https://www.wiltshireintelligence.org.uk/community-area/">https://www.wiltshireintelligence.org.uk/community-area/</a>

## Background

The Community Area Joint Strategic Needs Assessment (JSNA) works to collaboratively set local area priorities, by combining service led data with local insight and opinion. This acts as a catalyst for community led action that helps meet local need and supports the delivery of the Wiltshire Council Business Plan. Through working with the area boards, Wiltshire Council is able to encourage and support communities to take action to sustainably meet their needs.

## Aims of the JSNA

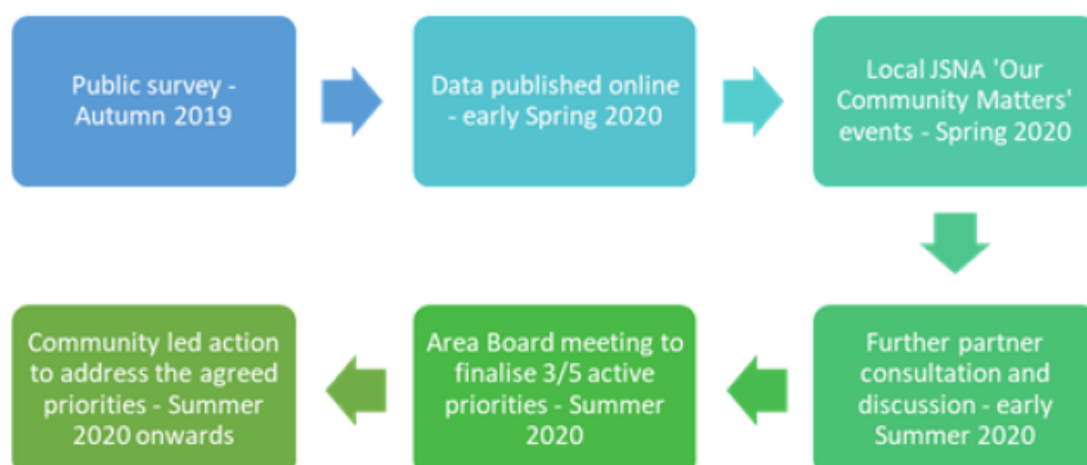
- To collaboratively set our local priorities for each community area by combining our service led data with local insight and opinion
- To facilitate community led action that addresses local priorities and supports the Wiltshire Council Business Plan.

## 2020 Delivery plan

The JSNA is refreshed every three years, with the next cycle due to be updated in 2020. There will be three key engagement stages to support the area board in hearing from their communities and identifying their active local priorities:

- Public JSNA survey (completed in Autumn 2019)
- A JSNA event (scheduled for Spring 2020)
- A resident and partner engagement exercise (scheduled for early summer 2020)

The flowchart shows the key milestones of the JSNA process with a more detailed description of the process below.



# **Wiltshire Council Information Item**

## **Public survey – Autumn 2019**

A public survey was delivered across the communities and 6,300 responses were received. Excel spreadsheets with the survey data are now available and full results from this survey will be published in due course at <https://www.wiltshireintelligence.org.uk/community-area/>

## **Data published online – early Spring 2020**

Public Health analysts will work collaboratively across Wiltshire Council departments, partners and local services to collect and analyse data.

## **JSNA ‘Our Community Matters’ events – Spring 2020**

The purpose of each event will be to bring together local people to share the results of the public survey, highlight the findings from the service data and discuss and set the local priorities. Each event will be used to identify the area’s top 12 priorities across the nine thematic areas:

- Arts, culture and leisure
- Children and young people
- Community safety
- Economy and employment
- Environment
- Health and wellbeing
- Highways and transport
- Housing
- Older people

## **Partner and resident engagement – early Summer 2020**

Following this meeting, further local conversations will take place with residents and partners. The engagement aims to establish partner and community capacity, resource and preference for the priorities that have been identified.

## **Wiltshire Council Information Item**

<b>Subject:</b>	<b>Wiltshire Family and Community Learning</b>
<b>Web contact:</b>	<a href="http://www.wiltshire.gov.uk/family-learning">http://www.wiltshire.gov.uk/family-learning</a>

Wiltshire Family and Community Learning includes a range of community-based and outreach learning opportunities designed to help people of different ages and backgrounds to :

- Gain a new skill
- Reconnect with learning
- Prepare to progress to formal courses
- Learn how to support their children better

Our vision and strategy supports national, regional and Council objectives to create stronger, more resilient communities, supporting adults back into work and helping parents to support their children's life chances by:

- Delivering programmes in identified high priority areas of need, to targeted parents and carers of young children.
- Offering learners long term, planned programmes with clear progression pathways.
- Improving the attainment of adults and children as a result of families taking part in intergenerational learning activities.

Courses are funded by the Education and Skills Funding Agency. Learners must be 19+, have been resident in UK/EU for three or more years, have less than five GCSEs grades A-C and/or be a service family and/or in receipt of benefits

Please call us on 01225 770478 to find out more about our service.

Email: [familyandcommunitylearning@wiltshire.gov.uk](mailto:familyandcommunitylearning@wiltshire.gov.uk)





## **Wiltshire Council Information Item**

<b>Subject:</b>	<b>Flood Resilience in Your Local Area</b>
<b>Web contact:</b>	<a href="mailto:renate.malton@wiltshire.gov.uk">renate.malton@wiltshire.gov.uk</a>

The recent wet weather may lead to communities asking about their flood risk.

Communities may be interested in holding a workshop to enable any towns and parishes within your area the opportunity to sit down and work through drafting up a flood plan for their community along with a colleague from the Environment Agency. Drawing up a flood plan can be daunting for a parish on its own but doing this with other like-minded parishes will help.

Communities can find out if they are at risk of flooding through the attached environment agency link: <https://www.gov.uk/check-flood-risk>

We would be looking to do this from January 2020. The best days to arrange these are Tuesdays & Wednesday – am/pm and evenings.

For more information please contact Renate Malton, Flood Resilience Officer [renate.malton@wiltshire.gov.uk](mailto:renate.malton@wiltshire.gov.uk)



## Applications open for new Board Co-ordinator role



Board members  
Andy Mintram,  
Irene Kohler,  
Rob Jefferson  
(Chair), Hazel  
Dunnett  
and Emma  
Leatherbarrow

We are looking for a Board Co-ordinator who can liaise with and co-ordinate our Local Leadership Board, including working with the chair and manager to prepare the agenda and papers for meetings, take notes and share these with all members of the Board.

Our Local Leadership Board is the driving force behind our commitment to ensure the voices of children, young people and adults are heard by those who run, plan and regulate health and social care services in the county.

Its members are from a variety of backgrounds, including the NHS and education, and their role is to help us prioritise the health and social care issues that are most important to the people of Wiltshire.

The Board Co-ordinator role is for 10 hours a month and applicants will need to have experience in minute taking. The closing date is 26 January 2020. Find out more at: [www.helpandcare.org.uk/work-with-us/vacancies](http://www.helpandcare.org.uk/work-with-us/vacancies)

Find out more about our Board at:  
[www.healthwatchwiltshire.co.uk/our-board](http://www.healthwatchwiltshire.co.uk/our-board)

### Keep in touch

Stay up to date with what we're doing and where we're going by signing up to our news alerts.

Simply complete the form at the bottom of the homepage on our website to receive the latest updates straight to your inbox.

Find out where we'll be heading at [www.healthwatchwiltshire.co.uk/events](http://www.healthwatchwiltshire.co.uk/events)

And follow us on social media:



healthwatchwiltshire



@HWWilts



healthwatchwiltshire



**January 2020**

## The right healthcare, for you, with you, near you

NHS Wiltshire Clinical Commissioning Group (CCG) is responsible for commissioning a broad range of healthcare for the population of Wiltshire. We are led by experienced local GPs drawn from across the county, who provide clear clinical leadership to the big decisions affecting the future of healthcare provision in Wiltshire, carefully tailored to meet the differing needs of people locally.

Our vision is to ensure the provision of a health service which is high quality, effective, clinically-led and local. We are committed to delivering healthcare that meets the needs of Wiltshire people, to consult and engage with our population to enable them to be involved in decisions made about health services and to deliver those services to people in their own homes or as close to home as possible.

### News

#### **New Independent Chair appointed to lead Bath and North East Somerset, Swindon and Wiltshire health and care system**

Health and care leaders from Bath and North East Somerset, Swindon and Wiltshire (BSW) have appointed a new Independent Chair.

Stephanie Elsy, a Non-Executive Director at Solent Community and Mental Health Trust and former Leader of Southwark Council in London, joins the BaNES, Swindon and Wiltshire Sustainability and Transformation Partnership (STP) from 9 December 2019.

She will provide independent leadership and work to oversee the ongoing improvement and integration of health and care services across the region.

She will also help to deliver the ambitions set out in BaNES, Swindon and Wiltshire's Five Year Plan – which will be published early next year – and provide support to the partnership as it develops into an Integrated Care System (ICS) by April 2021.

---

#### **New Director of Community and Joint Commissioning**

We are pleased to welcome Clare O'Farrell who has joined us as Interim Director of Community and Joint Commissioning. Clare has taken up this role to replace Ted Wilson who is currently acting Chief Operating Officer for Wiltshire.

Clare has had a 29 year career in variety of senior leadership roles in the NHS including senior operational management roles in acute hospital services in Wales and in the South West. She was the management lead for the establishment of the original Avon and Somerset Cancer Services Network and has previously worked in a commissioning role locally.

Since 2007 she has worked in senior roles at the Royal United Hospital where she has delivered strategic projects in partnership with NHS and with local people; this included a year supporting the successful bid for Wiltshire Community Services tender and most recently the acquisition of the RNHRD services which encompassed large scale public consultation and the successful transfer of patient services to new accommodation on the RUH site.

---

## Reminder - Transforming Maternity Services Together decision on proposal this month

Follow extensive consultation, a final set of recommendations to change the way maternity services are delivered in B&NES, Swindon and Wiltshire will be submitted to a joint meeting of the BaNES, Swindon and Wiltshire Clinical Commissioning Groups Governing Body on Thursday 16 January 2020.

This meeting will be in public and will take place at the Lackham Campus, Wiltshire College from 10am – 12 noon. If you have any queries, please email us at [maternity.transformationBSW@nhs.net](mailto:maternity.transformationBSW@nhs.net)

You can still find information on the proposals on the [Transforming Maternity Services Together website](#).

---

## BSW CCG online

As we head towards the merger with Bath and North East Somerset CCG and Swindon CCG in April 2020, we are consolidating our online presence.

Our Twitter accounts have already merged – you can follow us @NHSBSWCCG

We are working on our Facebook accounts – the new address will be @NHSBSWCCG

And by 1 April 2020 we will have a new website in place – more information to follow.

---

## Governing Body meeting

Our next Wiltshire CCG Governing Body meeting will be Thursday 23 January 2020 at 2pm at Southgate House, Pans Lane, Devizes.

The next BaNES, Swindon and Wiltshire (BSW) Governing Bodies in common meeting is on Thursday 16 January 2020 at Lackham Campus, Wiltshire College from 10am – 12 noon.

You can read the papers from previous meetings on our website [www.wiltshireccg.nhs.uk/governance/governing-body-meetings-in-public](http://www.wiltshireccg.nhs.uk/governance/governing-body-meetings-in-public)

---

## News archive

Read more news from Wiltshire CCG in our [news archive](http://www.wiltshireccg.nhs.uk/news/news-archive) – [www.wiltshireccg.nhs.uk/news/news-archive](http://www.wiltshireccg.nhs.uk/news/news-archive).

---

**Keep up to date with news and information from Wiltshire CCG on social media.**



**NHS Wiltshire CCG**



**@NHSBSWCCG**





WILTSHIRE POLICE

## CPT Area Briefing

Salisbury Area Community Policing Team

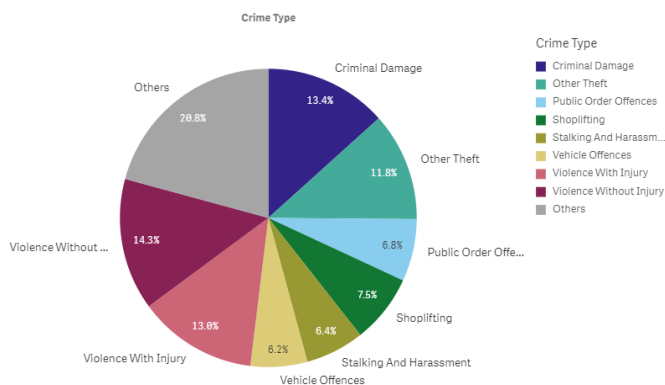


Proud to serve and protect our communities

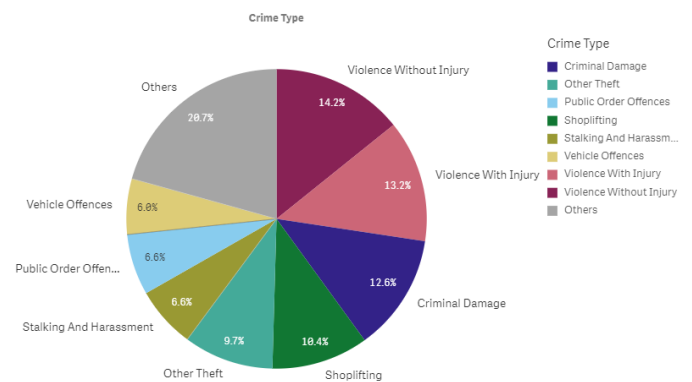
January/February 2020

## PERFORMANCE

Your Area - Five Highest Crime Groups (Previous 12 months)



Force Area - Five Highest Crime Groups (Previous 12 months)



*Wiltshire South and South East CPTs - crime and incident demand for the 12 months to November 2019*

## Force-wide

- Wiltshire Police has had an increase in the volume of recorded crime by 4.5% in the 12 months to November 19 and continues to have one of the lowest crime rates in the country.
- Our service delivery remains consistently good.
- In November, we received 8,234 999 calls which we answered within 5 seconds on average and 11,604 CRIB calls which we answered within 1 minutes 28 seconds on average.
- In November, we also attended 1,594 emergency incidents within 10 minutes and 30 seconds on average.
- Wiltshire Police has seen a 10% reduction in vehicle crime and 9% in residential burglaries in the 12 months to November 2019.
- The Crime Survey of England & Wales recently ranked Wiltshire as one of the top forces (78.3%) nationally for public confidence. It covers the 12 months to March 2019. The publication can be found here: [WWW.CRIMESURVEY.CO.UK](http://WWW.CRIMESURVEY.CO.UK)

For more information on Wiltshire Police's performance please visit:

PCC's Website - <https://www.wiltshire-pcc.gov.uk/article/1847/Performance>

HMICFRS Website - <https://www.justiceinspectrates.gov.uk/hmicfrs/police-forces/wiltshire/>

Police.uk - <https://www.police.uk/wiltshire>

WILTSHIRE POLICE

# CPT Area Briefing

Salisbury Area Community Policing Team

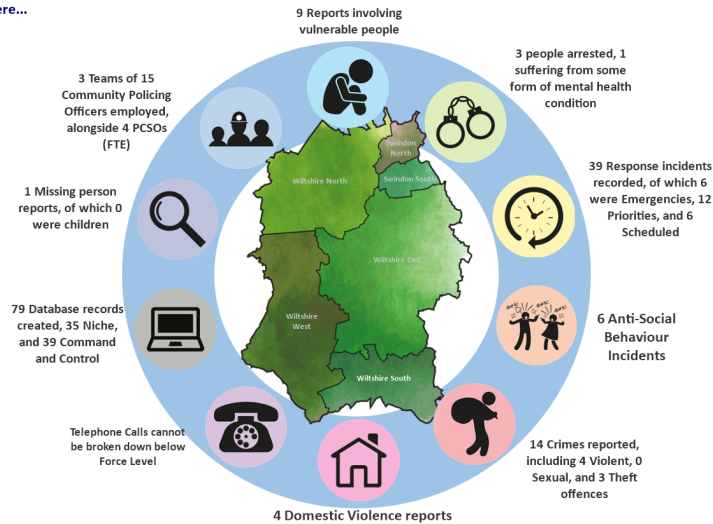


Proud to serve and protect our communities

January/February 2020

## Area specific Performance

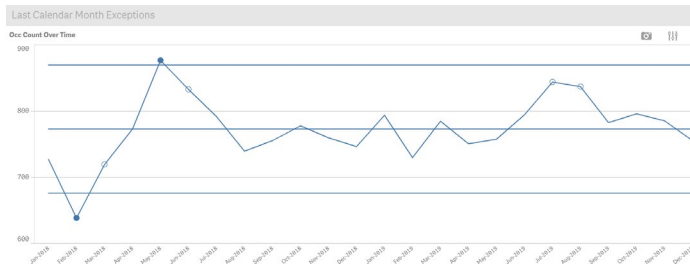
On an average day in Wiltshire South there were...



Wiltshire South / South East CPT Demand Overview – 12 months to November 2019

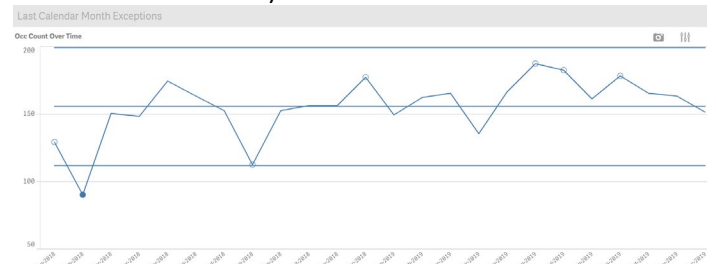
### Salisbury CPT Demand over 2 years:

No Exceptions but Burglary Business high for Dec(24) Ave 13.5.



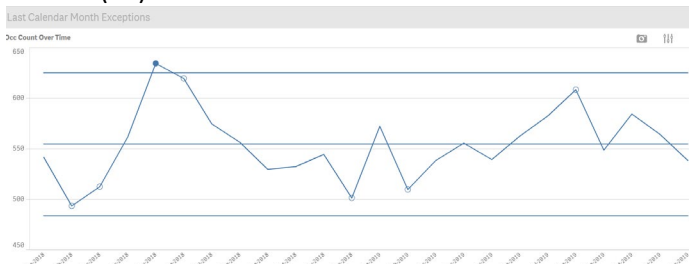
### Southern Area Board Demand over 2 years:

Exception: Short Term High in Possession of Drugs (Dec 5 offences – Ave 1.75)



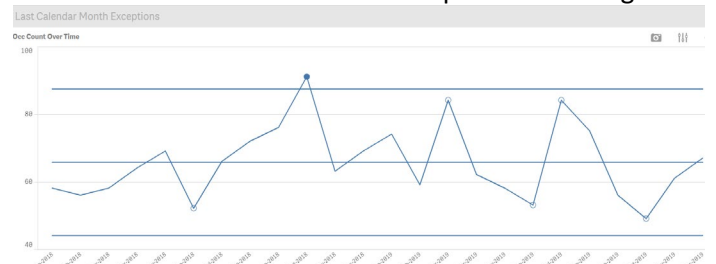
### Salisbury Area Board Demand over 2 Years:

Exception: Short Term High in Trafficking Drugs (5 offences in Dec – Ave 2.5)  
Not an exception but caution for Burglary Business high for Dec (18) Ave 8.1



### Wilton (SW Wilts Area Board) Demand over 2 years:

Exception: Bicycle Theft (Dec 3 offences – Ave 1.3)  
Caution - Small numbers can create peaks and troughs.



# WILTSHIRE POLICE

## CPT Area Briefing Salisbury Area Community Policing Team



Proud to serve and protect our communities

January/February 2020

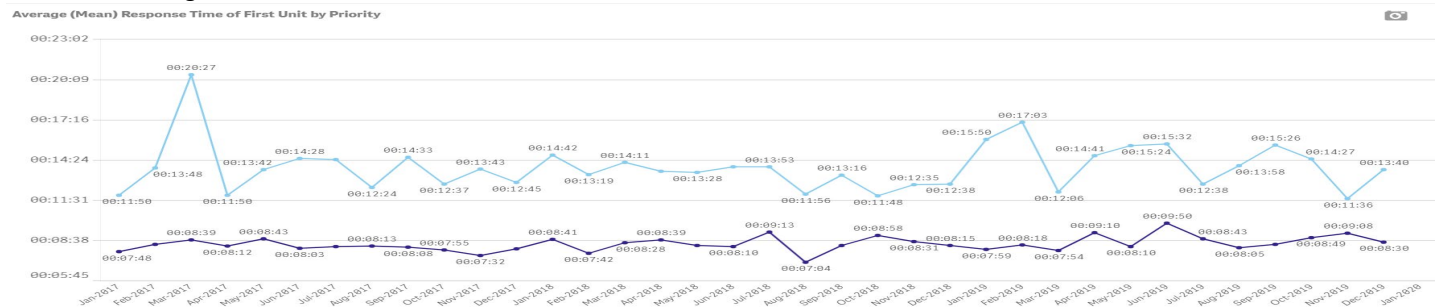
The ability to respond to immediate demand across our approx 300<sup>2</sup> miles in a timely manner when required is key to successful policing. Below are the last 3 years average Immediate response times, broken down to Area Board level.

### Response Times Salisbury CPT

Immediate Urban (within 15 minutes standard)

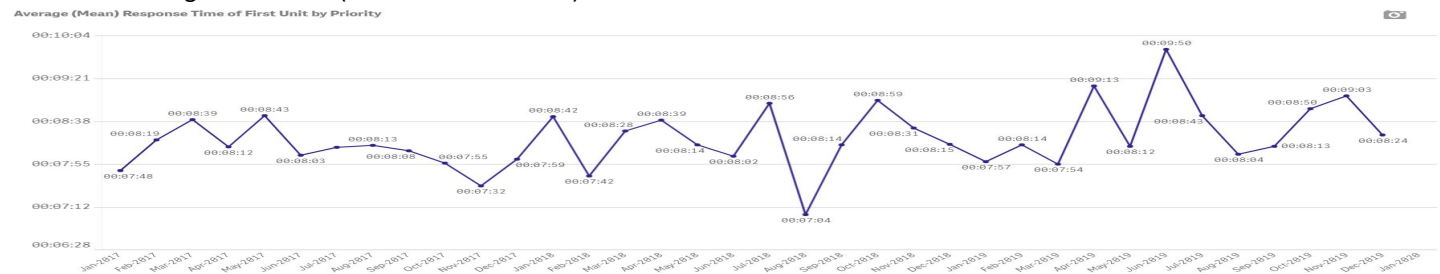
Immediate Rural (within 20 minutes standard)

December averages: 08:30 min Urban / 13:40 min Rural



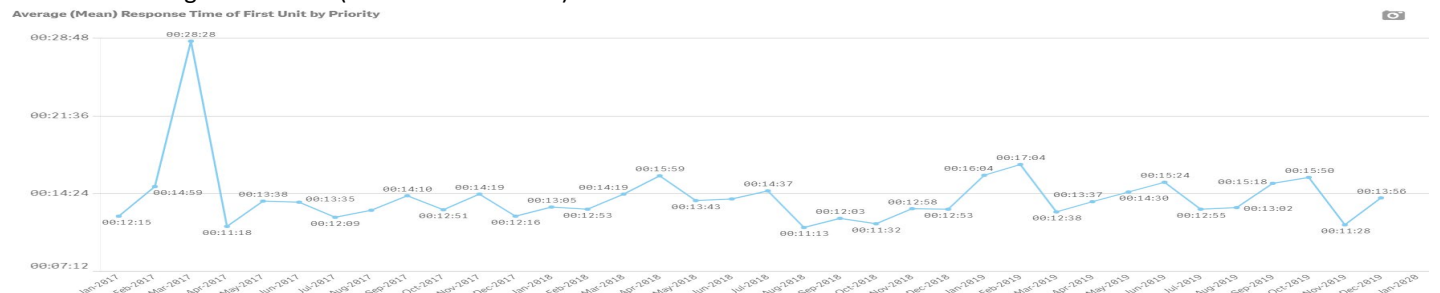
### Salisbury Area Board Beats

December average: 08:24 min (15 minutes Standard)



### Southern Area Board Beats

December average: 13:56 min (20 minute Standard)



### Wilton Area Board

December average: 13:05 min (20 minute Standard)



WILTSHIRE POLICE

# CPT Area Briefing

Salisbury Area Community Policing Team



Proud to serve and protect our communities

January/February 2020

## HIGH LEVEL CPT UPDATES:

**Operation Uplift:** Although we have yet to see the arrival of New Constables we have received 3 new PCSOs, Hannah Cranham, Grace Akers and Nicola Bird who are making themselves known on their new beat areas. Sadly, we have had to say goodbye to Kady Green who has relocated to start a new life outside of Policing and we will lose Harry Evans in February, who leaves to become a Constable. We look forward to watching his development.

Community Policing continues to evolve and we will build a team of Neighbourhood Officers, consisting of 2 Sgts, 4 PCs, and all our PCSOs. This team will continue to use our Problem Solving approach in order to analyse and identify concerns and resolve the matter, reducing demand across our communities. Details of the Team are below.

**Operation Hamper:** Recognising that Salisbury has a seasonal rise in reported theft and ASB, particularly around the City Centre, Op Hamper was introduced. This was intended to:

- Deny Space for offending – a high visible presence within the City
- Detect Offences at the time
- Deter Offenders from choosing to come to Salisbury to commit crime.

The operation relied upon Partnerships, making better use of the ShopWatch and PubWatch radio systems, linking the City CCTV and the Police to the Shops and Licenced Premises. Crime Prevention advice was key. Research shows that preventative measures used by shops before offences occur are far more effective than enforcement options after the event.

Result: We witnessed a rise in reported Shopliftings during November and early December, before a sharp fall in both Shoplifting and ASB during December. With 27 reported shopliftings in December (53 in November), only 2 had no recorded suspects making significantly higher detection rates.

This operation will continue in 2020 under the less seasonal name of **Op Vendor**.

**Cat Thefts:** We are experiencing an increase in catalytic converter theft/attempt thefts, particularly from 4x4 vehicles such as Landrover Freelanders and Honda CRVs. These vehicles are favoured as they provide easy clearance to get under the car, so some simple preventative advice can assist you:

Do not park with one wheel on the pavement.

If possible, park in a garage or off the road and in well-lit areas or under CCTV.

Use hard features, such as walls or fences to make it harder to get under your car.

Please report any suspicious people under vehicles to the police with as much detail as possible, including vehicles associated to them.

**Burglary in West Gomeldon:** Liam Lowrey (20) from Swindon was identified as the lookout for a burglary in June based on excellent CCTV images. Images on his own phone assisted with the identification, wearing the same clothes! At Swindon Crown Court on 17/12/19 he received 2 years detention in a Young Offenders Institution. We have yet to identify the other 3 offenders who entered the property.

WILTSHIRE POLICE

# CPT Area Briefing

Salisbury Area Community Policing Team



Proud to serve and protect our communities

January/February 2020

## Vulnerable Rough Sleeper:

Concerns were raised for the welfare of a vulnerable rough sleeper who has lived within the city for several years. Although previous engagement efforts had been met with resistance from the individual, it was evident that her health had deteriorated and that she was at risk of death or serious injury if left on the street during Winter. A multi-agency high risk behaviour meeting considered all the factors resulting in her admission to hospital against her consent and is now in a specialist placement that can support her needs.

**Graffiti:** Salisbury CCTV captured excellent images of youths graffitiing in the City earlier in 2019. Following circulating the images on social media, the parents of two youths brought them to the Police Station where they were interviewed and made a full admission. As a Community Resolution, they were brought back to the City under the supervision of a City Ranger and Police, where they assisted with cleaning graffiti from a shop window near the Poultry Cross. Although they were not responsible for all of this graffiti their remorse and willingness to do something positive is a better outcome than to have instantly criminalised the offenders.



## Reward & Recognition:

- **PCC Volunteer of the Year - Police Cadet Andrew Foord.** Andrew has been a Cadet since 2016 and received his award for creating 2 videos aimed at the youth audience surrounding Knife Crime and County Line Drug Dealing.
- **Daniel Cooper Memorial Award for Outstanding Service to Members of the Public – Police Constable James Barrett.** James was recognised for his commitment to Policing in Salisbury, with particular mention towards rural crime, an investigation into an organised crime group and leading a national hunt and capture of a particularly violent burglar. He is commended for the high standards he sets and delivering exceptional levels of service to Wiltshire Police and the Communities he serves. James joins our Neighbourhood CPT in January.

WILTSHIRE POLICE

# CPT Area Briefing

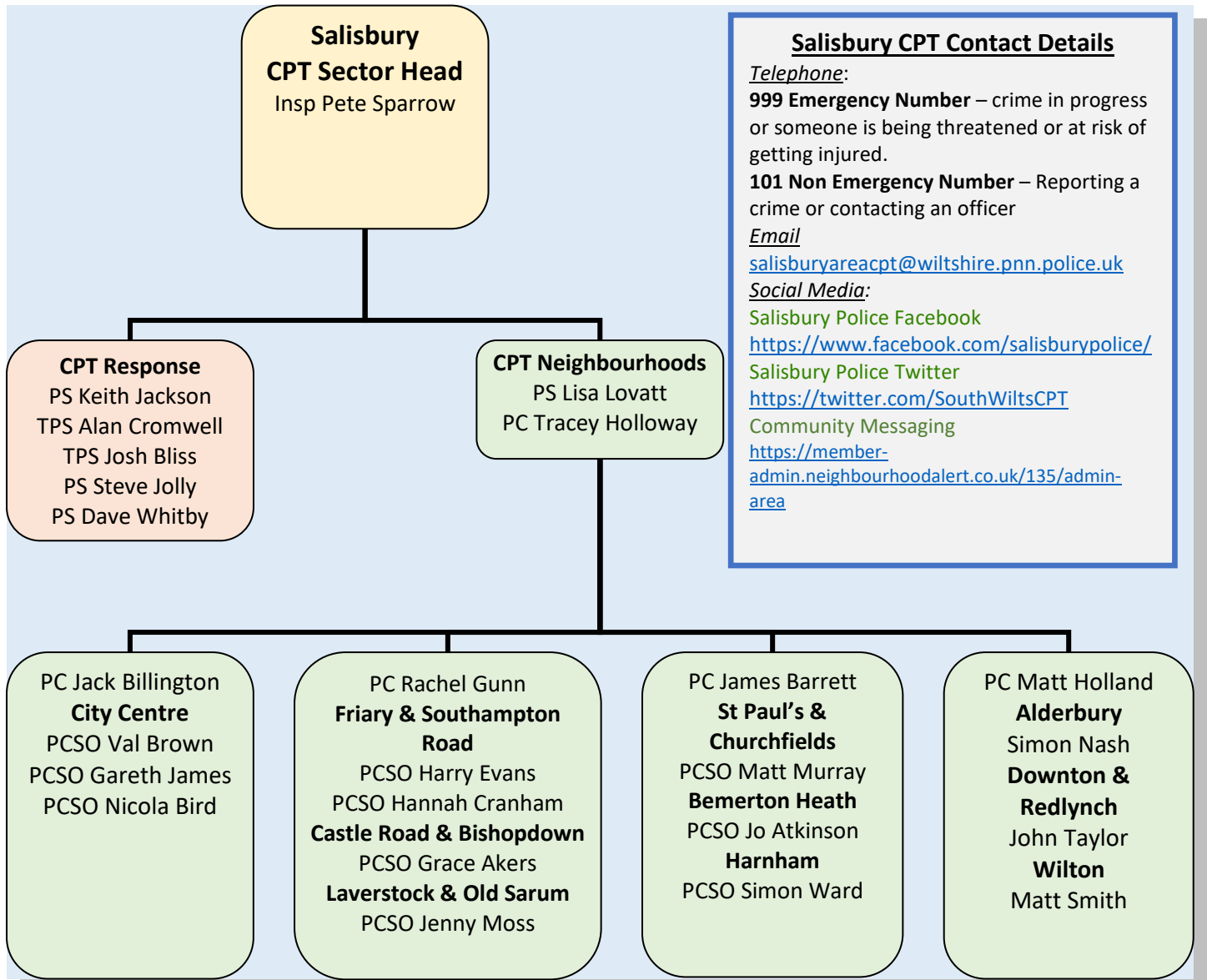
Salisbury Area Community Policing Team



Proud to serve and protect our communities

January/February 2020

## Salisbury Community Policing Team



**Salisbury CPT Contact Details**

*Telephone:*  
**999 Emergency Number** – crime in progress or someone is being threatened or at risk of getting injured.  
**101 Non Emergency Number** – Reporting a crime or contacting an officer

*Email*  
[salisburyareacpt@wiltshire.pnn.police.uk](mailto:salisburyareacpt@wiltshire.pnn.police.uk)

*Social Media:*  
 Salisbury Police Facebook  
<https://www.facebook.com/salisburypolice/>  
 Salisbury Police Twitter  
<https://twitter.com/SouthWiltsCPT>  
 Community Messaging  
<https://member-admin.neighbourhoodalert.co.uk/135/admin-area>

**Visibility & Engagement:** If you wish for Police to attend an event or meeting, please contact us with your specific request by email and we will try to attend.

You can find out more about Wiltshire South CPT, including news stories and contacts for local officers, on our website: [www.wiltshire.police.uk/WiltshireSouth](http://www.wiltshire.police.uk/WiltshireSouth)

WILTSHIRE POLICE

# CPT Area Briefing

Salisbury Area Community Policing Team



Proud to serve and protect our communities

January/February 2020

## LOCAL PRIORITIES

PRIORITIES FOR SALISBURY CPT	Comments
<b>Priority 1: Burglary Business</b>	
To address the rise in Business Burglary offences across the area.	Review crime series to establish patterns and investigative opportunities
<b>Priority 2: Op Hamper or Op Vendor</b>	
Continue our efforts to address the ASB and Thefts within the City in Partnership with ShopWatch and PubWatch making best use of our CCTV resources.	High Visibility Patrols: Deny Space for Criminals Detect Offences at the time Deter Offenders
<b>Priority 3: Rural Crime &amp; Hare Coursing</b>	
OP Artemis. This operation links actions and resources from Wiltshire Police, Rural Crime Partnership and FarmWatch. Pro-Active and high visibility patrols are being conducted across the Rural areas in support of this priority.	PCSO Matt Smith has just completed his drone training, which we hope will assist with future rural operations.
<b>Priority 4: Community SpeedWatch</b>	
All Neighbourhood Officers are to take visible ownership of their beat area and work with their communities to identify and reduce demand.	Support of our volunteer CSW Teams in assisting keeping our road network safer by tackling speeding issues.
<b>Priority 5: Reduce Demand through Problem Solving initiatives</b>	
All Neighbourhood & Response Officers are to take visible ownership of their beat area and work with their communities to identify and reduce demand.	How Can I prevent anyone from having to return to this? Identify owners for repeat offenders.

WILTSHIRE POLICE

# CPT Area Briefing

Salisbury Area Community Policing Team



Proud to serve and protect our communities

January/February 2020

## HIGH LEVEL PCC UPDATES

- **Precept Consultation** – From 6 January, I will be consulting with residents and businesses in Wiltshire and Swindon on what they would be prepared to pay as part of their council tax bill next year's towards local policing. I am still waiting for notification from the Home Office on what our settlement will be in Wiltshire for 2020/21 and hope to be in receipt of this soon. I strongly encourage you to [submit your feedback on my website](#).

## HIGH LEVEL FORCE UPDATES

- We continue to implement **changes in our community policing teams** to better meet demand in our different patches. It is a phased approach and as of December the boundaries of our community policing teams changed with their names also changing to reflect the areas covered.

**The new list is:** Swindon Area CPT, Chippenham Area CPT, Royal Wootton Bassett Area CPT, Trowbridge Area CPT, Warminster Area CPT, Salisbury Area CPT, Devizes Area CPT and Amesbury Area CPT.

- **Changes to 101 system** – In mid-December the options available when members of the public call 101 have changed to allow for to be connected directly to some departments. They will also no longer be taking reports of shoplifting unless it is in progress, an offender is detained or there was violence to any members of the public or staff. Instead callers are encouraged to report the crime online and submit any available CCTV.

## GET INVOLVED

- You can keep up to date with the latest news in your area by signing up to our Community Messaging service – [www.wiltsmessaging.co.uk](http://www.wiltsmessaging.co.uk)
- You can follow your CPT on social media

<https://www.wiltshire.police.uk/Followus>

- More information on your CPT area can be found here: [www.wiltshire.police.uk](http://www.wiltshire.police.uk) and here [www.wiltshire-pcc.gov.uk](http://www.wiltshire-pcc.gov.uk)



WILTSHIRE POLICE

## CPT Area Briefing

Salisbury Area Community Policing Team



Proud to serve and protect our communities

January/February 2020

## Beat Area Updates

Area Board	Beat Area	PC	PCSO	Community Engagement & What are we Focusing on?
Salisbury	City Centre (ES11)	Jack Billington	Val Brown, Gareth James & Nicola Bird	We will be implementing Operation Vendor, which will build on the success of Operation Hamper and continue to reduce reports of ASB and Shoplifting. We will also be developing a strategy to reduce violent crime relating to the night time economy.
	Bemerton Heath (ES15)	James Barrett	Jo Atkinson	Our focus will be on road safety, particularly speeding vehicles and cycles with no lights. We will also be reviewing the possession and supply of drugs on the beat area.
	St Pauls & Churchfields (ES16)		Matt Murray	We are working on Op Vantor shoplifting offences with the shops on Churchill Way West Retail Park and the new Tesco Express on Wilton Road with some identified repeat offenders.
	Harnham (ES17)		Simon Ward	We will be focusing on addresses that create the most demand, alongside visibility and engagement.
	Friary & Southampton Road (ES12)	Rachel Gunn	Harry Evans & Hannah Cranham	Vulnerability checks in line with closure orders applied to protect addresses at risk of county lines activity and ongoing work in support of Op Vendor.
	Castle Road & Bishopdown (ES14)		Grace Akers	The focus will be on crime prevention work with our churches and ASB issues concerning a couple of addresses where high demand has been identified.
Southern Wiltshire	Old Sarum & Laverstock (EU11 part)	Matt Holland	Jenny Moss	School engagement in Laverstock and some wider ASB issues on the Longhedge Estate as the new community integrates.
	Alderbury (EU11 part)		Simon Nash	We are working towards some crime prevention advice to help target harden the area. This will particularly focus on theft and burglary offences.
	Downton & Redlynch (EU12)		John Taylor	Continued partnership work to address specific youth ASB issues. Education regarding catapult offending and speeding motorist.
South West Wilts	Wilton Town & Rural (EW11&12)	Matt Holland	Matt Smith	We will focus on Poaching/hare coursing in the rural areas alongside visibility in the Town. Engagement sessions: Cattle Market-Tues 04 <sup>th</sup> Feb 0900hrs-1200hrs Wilton Café-Sat 18 <sup>th</sup> Jan 1000hrs-1030hrs

WILTSHIRE POLICE

# CPT Area Briefing

Salisbury Area Community Policing Team



**Proud** to serve and **protect** our communities

January/February 2020

<b>Report to</b>	Southern Wiltshire Area Board
<b>Date of Meeting</b>	30/01/2020
<b>Title of Report</b>	Community Area Grant funding

**Purpose of the report:**

To consider the applications for funding listed below

<b>Applicant</b>	<b>Amount requested</b>
<p><b>Applicant:</b> Salisbury Pride UK  <b>Project Title:</b> Salisbury Pride UK Festival</p> <p><a href="#">View full application</a></p>	<p>£5000.00 from the Health &amp; Wellbeing Budget</p> <p><b><i>There is £3.9k remaining in the Health &amp; Wellbeing Budget</i></b></p>
<p><b>Applicant:</b> The Milford Preservation Group  <b>Project Title:</b> River Bourne Island project</p> <p><a href="#">View full application</a></p>	<p>£1000.00 from the Community Area Grant budget</p> <p><b><i>There is £5.8k remaining in the Community Area Grants Budget</i></b></p>

**1. Background**

Area Boards have authority to approve Area Grants under powers delegated to them. Under the Scheme of Delegation Area Boards must adhere to the [Area Board Grants Guidance](#)

[The funding criteria and application forms](#) are available on the council’s website.

**2. Main Considerations**

2.1. Councillors will need to be satisfied that funding awarded in the 2019/2020 year is made to projects that can realistically proceed within a year of it being awarded.

2.2. Councillors must ensure that the distribution of funding is in accordance with the Scheme of Delegation to Area Boards.

2.3. Councillors will need to be satisfied that the applications meet the Community Area Board grants criteria.

**3. Environmental & Community Implications**

Grant Funding will contribute to the continuance and/or improvement of cultural, social and community activity and wellbeing in the community area, the extent of which will be dependent upon the individual project.

**4. Financial Implications**

Financial provision had been made to cover this expenditure.

## 5. Legal Implications

There are no specific legal implications related to this report.

## 6. Human Resources Implications

There are no specific human resources implications related to this report.

## 7. Equality and Inclusion Implications

Community Area Boards must fully consider the equality impacts of their decisions in order to meet the Council's Public Sector Equality Duty.

Community Area Grants will give local community and voluntary groups, Town and Parish Council's equal opportunity to receive funding towards community based projects and schemes, where they meet the funding criteria.

## 8. Safeguarding Implications

The Area Board has ensured that the necessary policies and procedures are in place to safeguard children, young people and vulnerable adults.

## 9. Applications for consideration

Application ID	Applicant	Project Proposal	Requested
<a href="#">3496</a>	Salisbury Pride UK	Salisbury Pride UK festival	£5000.00
<b>Project Description:</b> We will hold a festival feel event on Saturday 13th June 2020 the event will be to highlight the need for acceptance for LGBT and other marginalised groups we will provide support to educate and end discrimination. Our event will be family friendly			
<b>Input from Community Engagement Manager:</b> This year, the Salisbury Pride event is being run by a newly formed community group of local volunteers, aiming to promote equality and diversity to eliminate discrimination against the LGBT+ and wider marginalised communities in southern Wiltshire, including Black and Minority Ethnic (BAME) communities and communities representing those with disabilities.  The aim is to bring together around 7k people drawn from across the south of the county, to showcase live entertainment and a range of family friendly events, making this year's event the biggest and best it has ever been for Salisbury.  The Health & Wellbeing Budget is devolved from Wiltshire Council's Adult Social Care budget, primarily intended to support projects and activities for older people. However, this budget has been used – through the exercising of councillors' discretion in the past – for other initiatives which promote equality and diversity, including various events supporting BAME. The Salisbury Area Board agreed to contribute £1k to this event from its Health & Wellbeing budget at its November 2019 meeting.			
<b>Proposal</b> That the Area Board determines the application.			

Application ID	Applicant	Project Proposal	Requested
<a href="#">3556</a>	Milford Preservation Group	River Bourne Island project	£1000.00
<p><b>Project Description:</b> To clear improve and make safe the island. To enhance the wildlife value of the island. To improve the wildlife environment of the river and riverbanks below and adjacent to Milford Mill Bridge</p> <p><b>Input from Community Engagement Manager:</b> This application is to carry out improvement works to the River Bourne at Milford Mill Bridge. The applicant is also requesting a £1k contribution from the Salisbury Area Board, as the works in question border both community areas.</p>			
<p><b>Proposal</b> That the Area Board determines the application.</p>			

No unpublished documents have been relied upon in the preparation of this report

**Report Author:**

Karen Linaker, Community Engagement Manager

01722 434697

[karen.linaker@wiltshire.gov.uk](mailto:karen.linaker@wiltshire.gov.uk)

